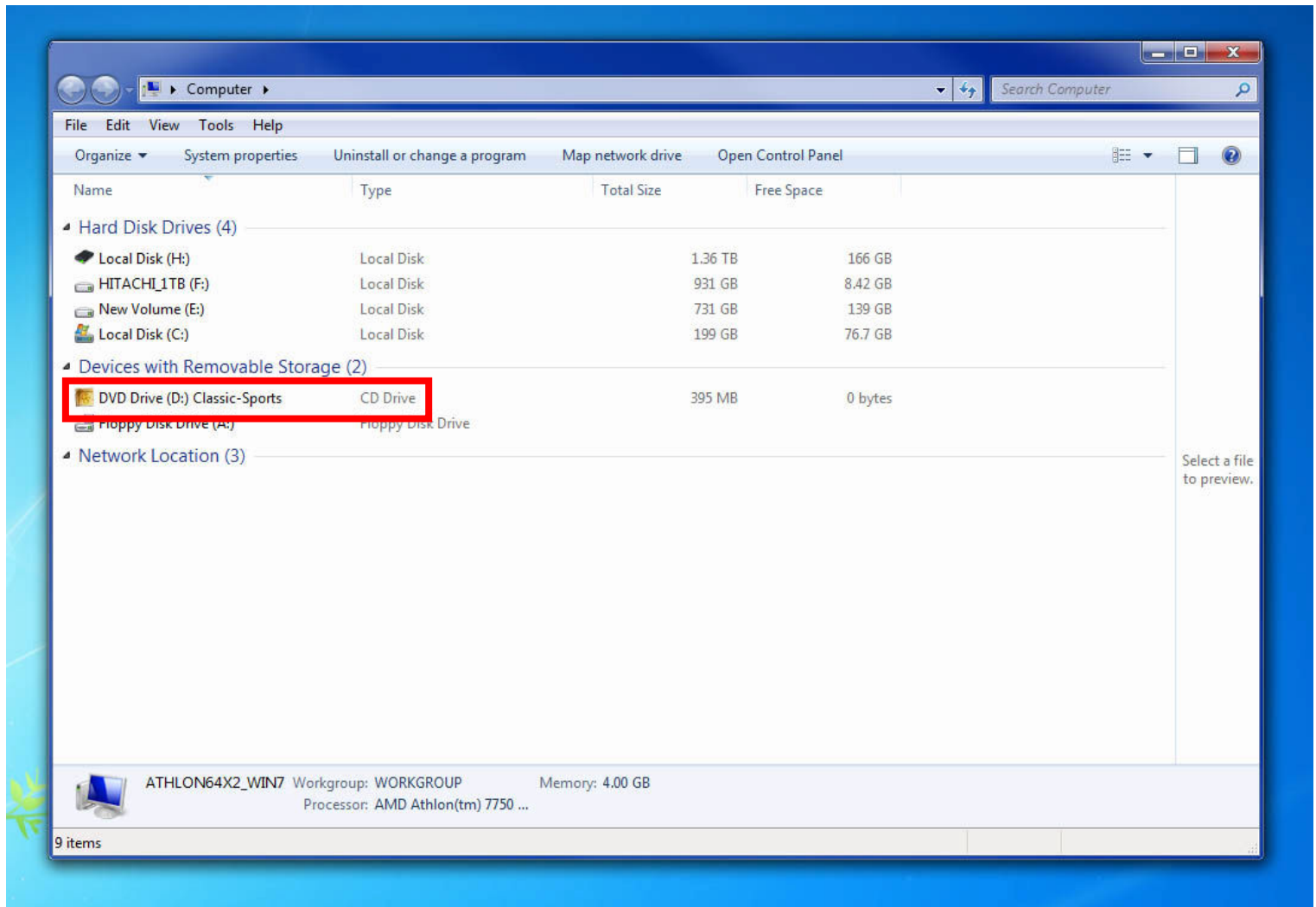


## CD-ROM drive letter assignment



Open My computer, either from your desktop or a link in the start menu.

The CD drive should state next to it that it is a CD-Drive, or display the title of the CD/DVD you currently have in it.



If you look closer, you can see that it is your CD drive  
The letter allocated is the one in brackets



From this example you can see that the CD-ROM drive letter is "D"