

Opening a saved MCB file in Master Card builder



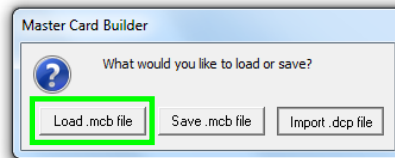
Open Master Card Builder.

On the first screen select your card size and orientation.

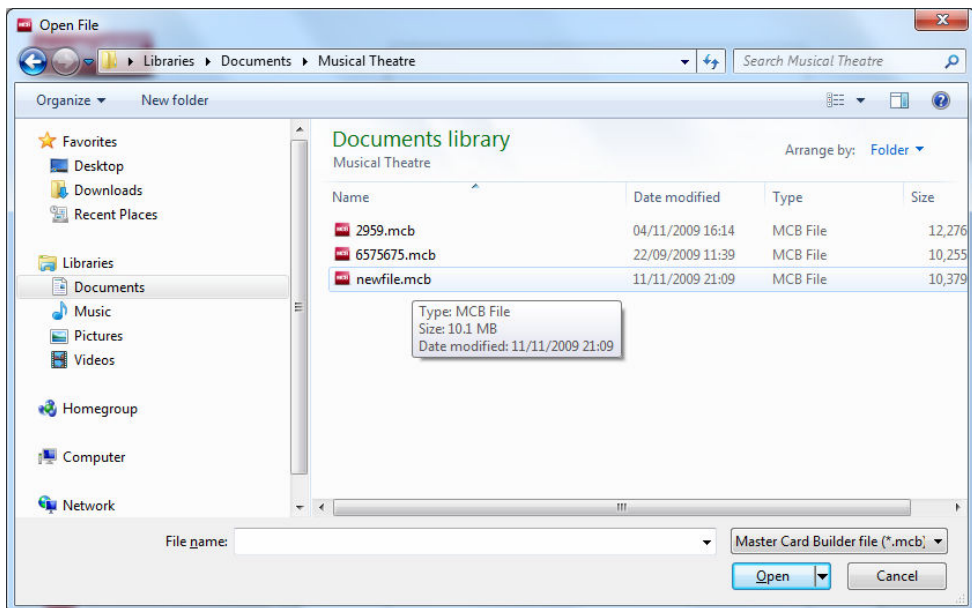


When the program is open click on File.

You will then be presented with the following question; Click on "import a .dcp file"

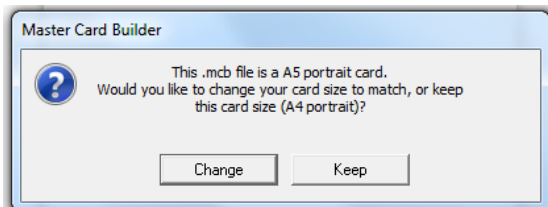


This will bring up the "Open File" dialog.



This will default to the my documents folder, navigate to the location you saved your file.

When you find the file you want click on it then click Open at the bottom



You may be given this message depending on which card size you chose at

the start, click change or keep to suit your needs. This way you can import the Saved MCB to suit any card size you desire. And not just the A5 that is the default export form Musical Theatre.

Finally your file is opened and the pieces displayed in the palette

